

Human PDL2 Protein; mFc Tag

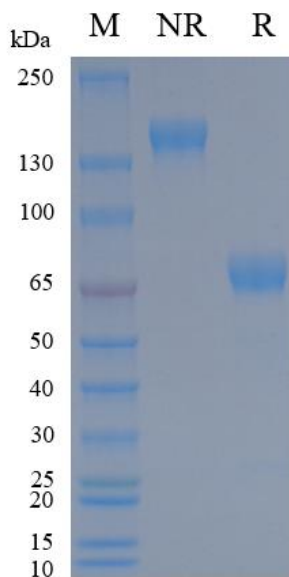
Product Information

Product Name	Human PDL2 Protein; mFc Tag
Storage temp	Store at $\leq -70^{\circ}\text{C}$, stable for 6 months after receipt. Recommend to aliquot the protein into smaller quantities for optimal storage. Please minimize freeze-thaw cycles.
Catalog# / Size	GM-88393RP-100 / 100 μg GM-88393RP-1000 / 1 mg

Protein Information

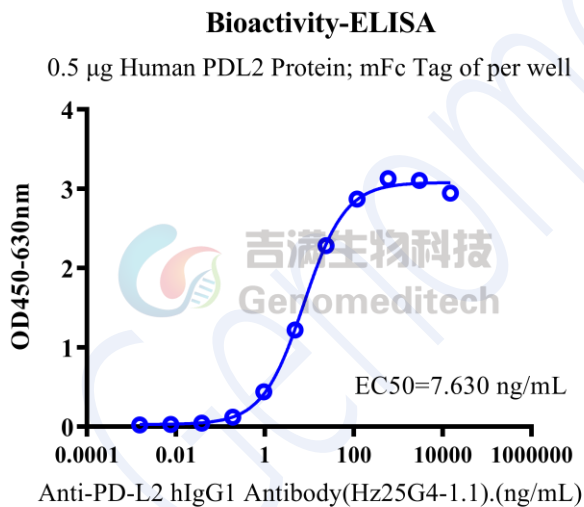
Alternative Names	PD-L2, CD273, PDCD1 ligand 2, PDCD1L2, PDCD1LG2
Source	Human PDL2 Protein; mFc Tag (GM-88393RP) is expressed from human 293 cells (HEK-293). It contains AA Leu 20 - Pro 219 (Accession # AAI13679). This protein carries a mFc tag at the C-terminus.
Purity	> 95% as determined by SDS-PAGE
Endotoxin	< 1 EU/ μg , determined by LAL gel clotting assay
Predicted Mol Mass	48.9 KDa
Formulation	Supplied as a 0.2 μm filtered solution of PBS, pH7.2-7.4.
Description	PD-L2 is a transmembrane protein in the B7 family that modulates T cell responses. It is mainly expressed on professional antigen-presenting cells (dendritic cells, macrophages, B cells) but can also be found on some non-hematopoietic tissues and certain tumor cells. PD-L2 binds PD-1 on T cells, delivering inhibitory signals that dampen activation, proliferation, and cytokine production, thereby helping maintain self-tolerance and shape immune responses in infection, cancer, and autoimmunity. PD-L2 signals via PD-1, expressed on activated T/B cells, NK cells, and myeloid cells. Engagement recruits SHP-2 and other phosphatases to the PD-1 ITIM, dephosphorylating molecules in TCR and CD28 pathways, and reducing PI3K/AKT, MAPK, and NF- κ B signaling. This suppresses T cell metabolism, survival, and effector functions. The PD-1/PD-L2 axis also modulates other immune cells and the tumor microenvironment, promoting regulatory T cell activity and contributing to immune escape in cancer.

SDS-PAGE



On SDS-PAGE under non-reducing (NR) condition and reducing (R) condition. The gel was stained overnight with Coomassie Blue. The purity of the protein is greater than 95%.

Bioactivity-ELISA



Human PDL2 Protein; mFc Tag (Catalog # GM-88393RP) was immobilized at 5 µg/ml (100 µL/well). Increasing concentrations of Anti-PD-L2 hIgG1 Antibody(Hz25G4-1.1) (Catalog # GM-79817AB) were added.